



Accessories

## AMF-BRUNS FUTURE**SAFE** 2.0

Head and backrest - patented safety system for wheelchair occupants



[www.amf-bruns.de](http://www.amf-bruns.de)



# AMF-BRUNS FUTURESAFE 2.0

## Head and backrest - patented safety system for wheelchair occupants



The FUTURESAFE can be swivelled to the side to save space when no wheelchair is being transported



With the integrated shoulder belt and the PROTEKTOR occupant & wheelchair restraint system, the wheelchair user is fully secured.



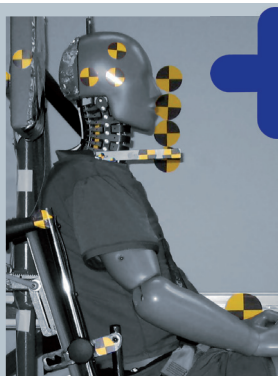
Additional cushions for head and backrest are optionally available to provide extra comfort during the ride.

### THESE FACTS MAKE ALL THE DIFFERENCE

- » FUTURESAFE ensures maximum safety for the wheelchair occupant. The head and back support offers optimum safety in the event of a rear impact and the integrated shoulder belt in the event of a front impact.
- » The patented system is safe and space-saving at the same time
- » Head and backrest are individually adjustable
- » With two hand straps, the head and backrest can be easily swivelled separately
- » New design with comfortable upholstery, visually adapted to the vehicle equipment
- » Extra comfort with additional cushions for head and backrest (optionally available in three sizes)

### TECHNICAL DATA

- » Headrest and back support split, integrated telescopic lock for easy length adjustment, 180° swivelling
- » Height-adjustable; suitable for all common wheelchair types
- » Simple and safe operation via cable pull technology and push buttons
- » 20 G front crash tested, integrated automatic shoulder belt
- » 15 G rear crash tested according to Euro NCAP
- » Weight saving of up to 15 % (vs. previous model)
- » Floor/wall mounting for large vehicles



**+** Tomorrow's safety today!

#### FUTURESAFE® Head & Backrest

FUTURESAFE is a safe, space-saving and comfortable patented safety system, which is flexibly customisable and comes with an integrated shoulder belt for the wheelchair occupant.

#### PROTEKTOR® Occupant & Wheelchair Restraint System

The PROTEKTOR® restraint system from AMF-Bruns meets DIN 75078 part II, ISO 10542.

#### PROSAFE® „Kraftknotenadapter“ Integrated Lap Belt

With the „Kraftknotenadapter“ system the wheelchair is quickly and precisely fitted to the vehicle's floor. It comes with a pelvic belt for the wheelchair occupant.



AMF-Bruns GmbH & Co. KG | Hauptstraße 101 | D-26689 Apen  
Telefon +49 (0) 44 89 / 72 72 50 | Fax +49 (0) 44 89 / 62 45  
hubmatik@amf-bruns.de

[www.amf-bruns.de](http://www.amf-bruns.de)



DIN EN ISO 9001  
REG.-NR. 01 0105027